



VENUE SPECS 2024

FELSENKELLER BALLROOM
NAUMANN'S TANZLOKAL



A landmark of the west of Leipzig for over 130 years, the Felsenkeller provides ample space for various conferences and events, tastefully combining historic ambiance and careful modernisation.



FELSENKELLER BALLROOM

- 3 Room Info / Facilities
- 4 Sound
- 5 Lights / Extras / Power Supply
- 6 Rigging / Lighting
- 7 Room Setting – Standing
- 8 Room Setting – Seated
- 9 Backstage
- 10 Loading

NAUMANN'S TANZLOKAL

- 12 Room Info / Facilities
- 13 Sound
- 14 Lights / Power Supply / Room Setting / Backstage / Loading

GENERAL INFORMATION

- 16 Overview / Parking / Loading
- 17 Travel Info / Points of Interest
- 18 Contact



PLAY A SHORT
PRESENTATION VIDEO



FELSENKELLER BALLROOM

Built in the neo-baroque style, the grand ballroom is the jewel of the Felsenkeller.

With its beautiful vaulted ceiling, parquet-covered event space enclosed by two porticoes and impressive chandeliers, the ballroom creates the perfect ambiance to bring your ideas to life and meet your needs in the most impressive way.

SUITABLE FOR

- Gala dinners
- Corporate parties
- Meetings
- Conferences
- Seminars
- Exhibitions
- Media and TV productions

ROOM INFO / FACILITIES

BALLROOM

- Dimensions: (W x D) 27.5 x 32.0 m
- Clear height: 10.8 m
- Capacity: 1.700 standing / 800 seated
- Floor load: 500 kg/m²
- Suspension points: 6 (400 kg max. each)

STAGE

- Dimensions: (W x D x H) 9.0 x 8.0 x 1.0 m
- Clear height: 4.0 m from stage edge
- Floor load: 500 kg/m²
- Stage extension upon request



SOUND

Further equipment available upon request!

FRONT PA

- 12x d&b Q1
- 6x d&b J Sub
- 4x d&b E0 delay lines
- 2x d&b E12 nearfill

MONITORING

- 4x d&b M2
- 1x PL Audio M15CX top for drumfill
- 1x PL Audio B18 sub-bass for drumfill

MICROPHONES

- 5x Shure SM 58
- 4x Shure UR4D handheld mic
- 4x Shure SM 57
- 3x AKG SE 300 B
- 3x Beyerdynamic Opus 87
- 2x Beyerdynamic Opus 88
- 2x Shure UR4D body backs
- 2x Shure UR4D double receiver
- 1x Sennheiser e901
- 1x Shure Beta 52A

DESKS & STUFF

- 7x Cat 5/6/7 lines FOH to stage
- 1x Allen & Heath Avantis
- 1x 48 channel stagebox DX/4816
- 1x Cat 7 lines FOH to LX-1

POWER AMPLIFIERS

- 15x d&b D12

DI

- 10x Thomann DI box
- 4x BBS DI box

STANDS

- 11x Gravity stand – tall
- 10x Gravity stand – small

LIGHTS

Further equipment available upon request!

INSTALLED

- 14x JB Lighting A8 (standard mode)
- 12x JB Lighting P7 (mode 2 / 31 CH)
- 4x ARRI 2 KW Fresnel

SUPPLIES

- 1x Chamsys MQ500M
- 1x tourhazer
- 1x 12 channel dimmer

NOT INSTALLED (INCLUSIVE)

- 6x Profiler (ETC Source4)
- 4x Elation Design Brick
- 4x ARRI 2 KW Fresnel
- 1x Lightmaxx tourhazer
- 1x 2 KW follow spot

EXTRAS

EXTRA PARTS

- 10x scissor type platform (2.0 x 1.0 m)
- 2x Technics MK 12/10 (charged separately)
- 1x Pioneer DJM 900 (charged separately)

POWER SUPPLY

BALLROOM

- 3x 32 ACEE

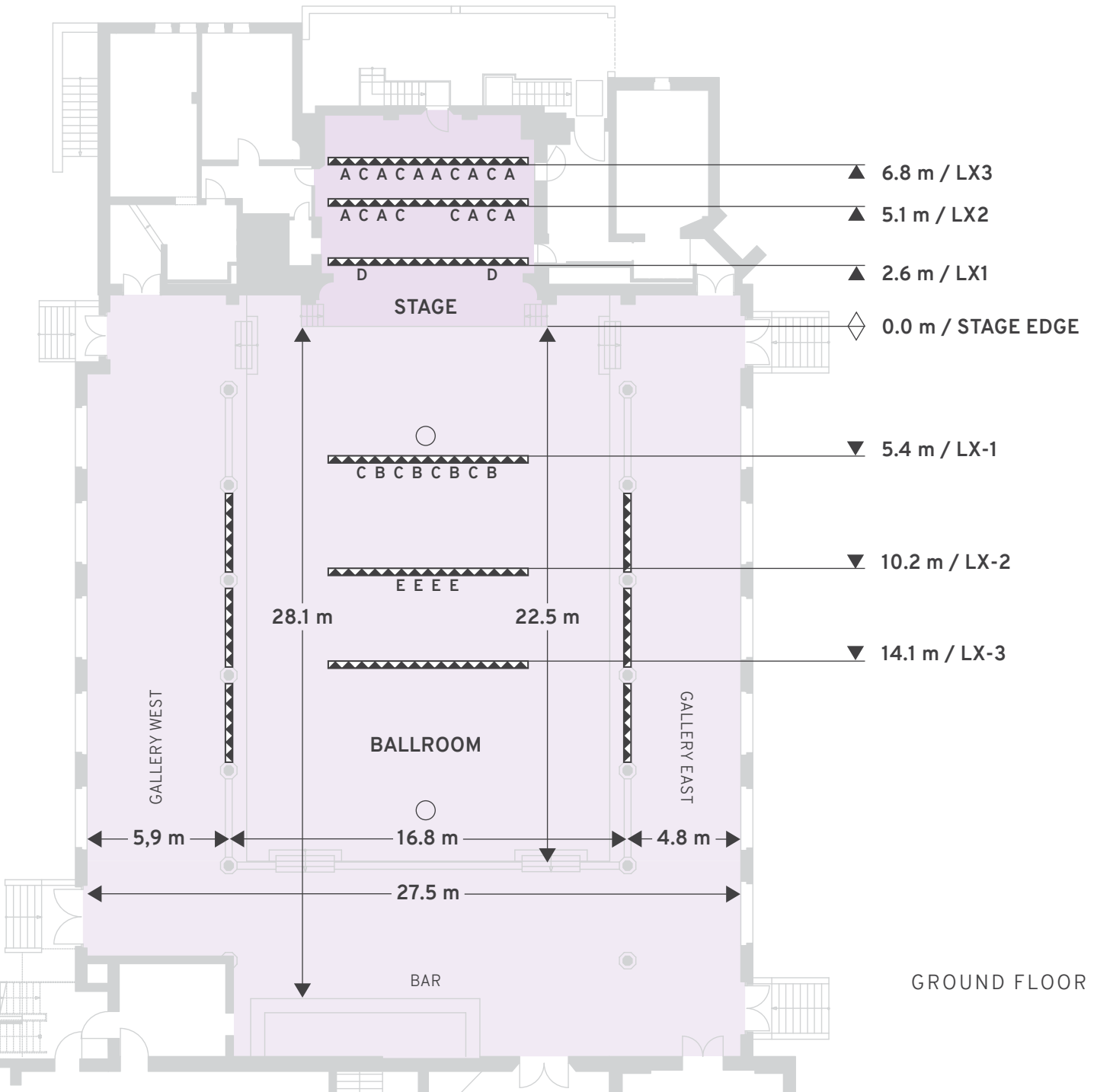
STAGE

- 1x 63 ACEE
- 1x 16 ACEE
- 2x 32 ACEE



RIGGING / LIGHTING

A full rigging manual with further details available upon request!



LIGHTS

- A JB Lighting A8 (standard mode)
- B JB Lighting A7 (compressed mode / 12 CH)
- C JB Lighting P7 (mode 2 / 31 CH)
- D 4 Lite Blinder (single mode / 2 CH)
- E ARRI 2 KW Fresnel

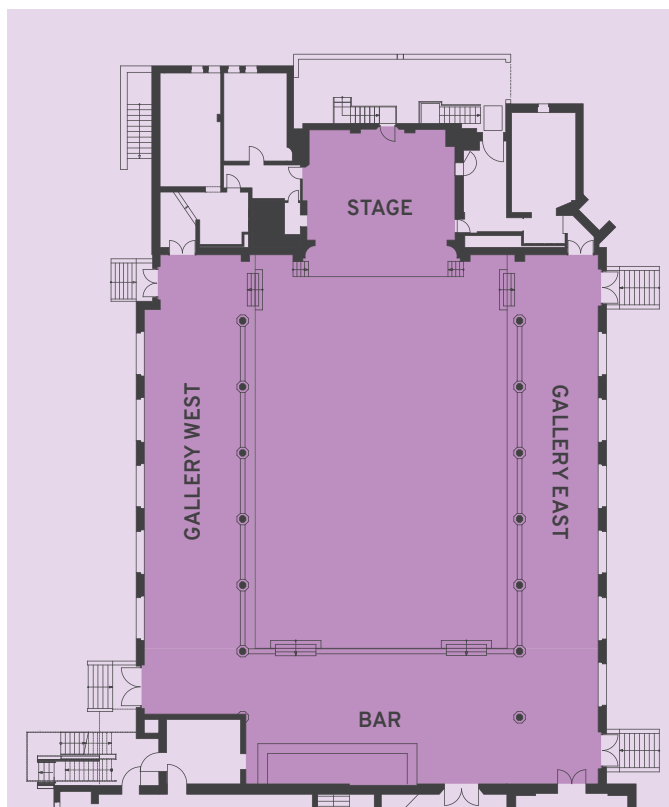
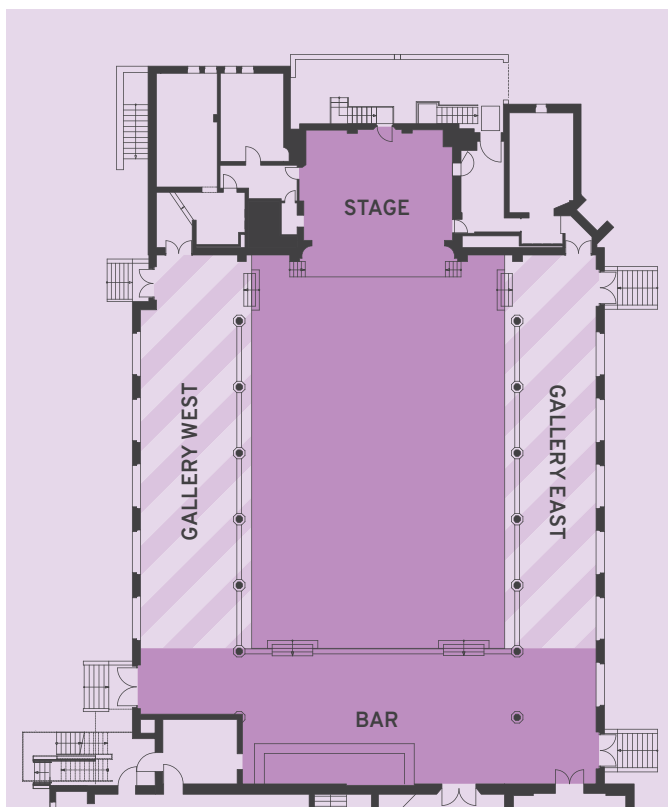
BALLROOM

- (W x D) 27.5 x 32.0 m
- Clear height: 10.8 m
- 2 chandeliers
- D8+ engines (2 per track)
- Three point traverse

STAGE

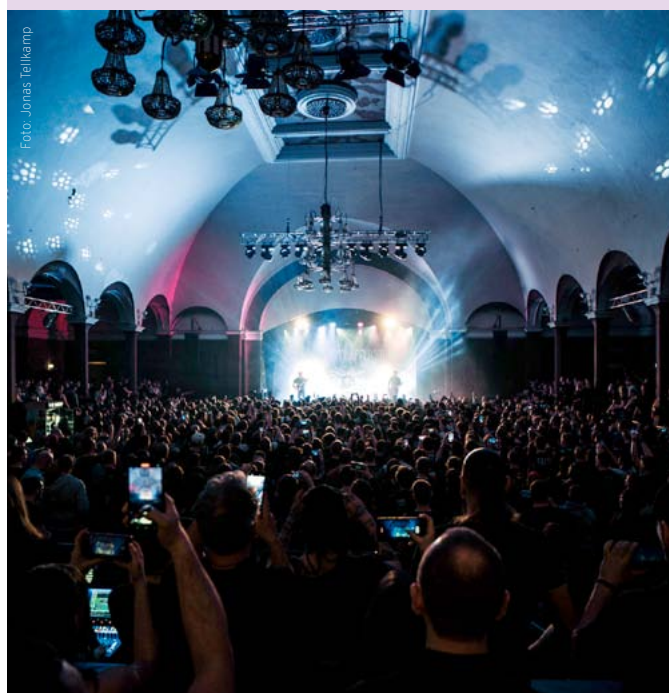
- (W x D x H) 9.0 x 8.0 x 1.0 m
- Clear height: 4.0 m from stage edge
- Manual chain hoist / 1 t
- Globaltruss four point traverse
- Truss fixed at 5.4 m height
- Weight per truss: 200 kg

ROOM SETTING > STANDING



GALLERIES CLOSED

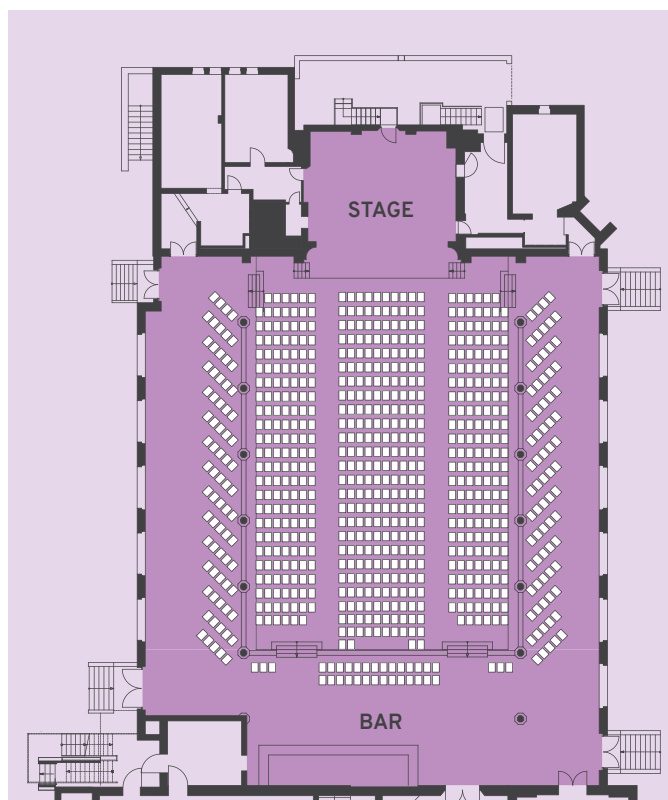
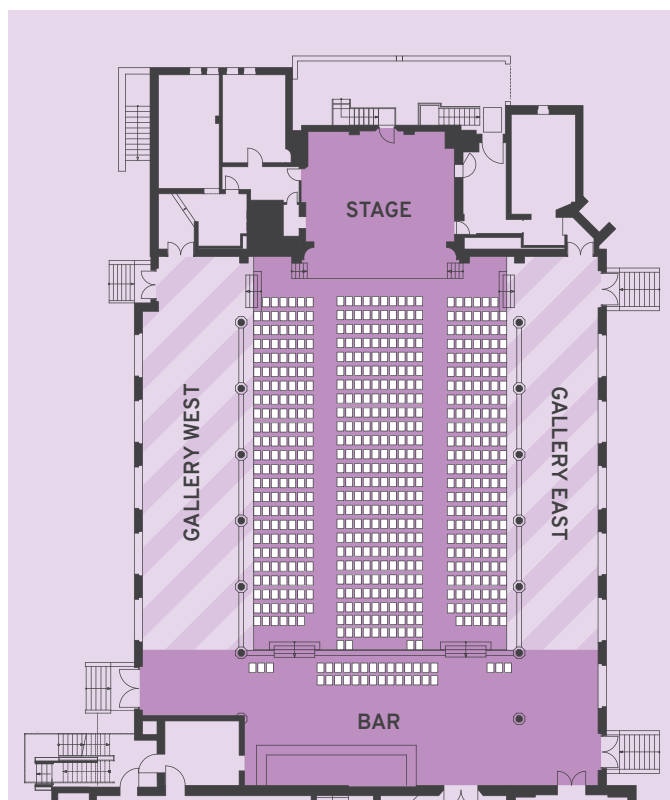
- Floor space: 547 m² (parquet: 350 m²)
- Capacity: 800 standing
- Both galleries separated by backdrops



GALLERIES OPEN

- Floor space: 840 m² (parquet: 350 m²)
- Capacity: 1.700 standing

ROOM SETTING > SEATED



GALLERIES CLOSED

- Floor space: 547 m² (parquet: 350 m²)
- Capacity: 450 seated
- Both galleries separated by backdrops



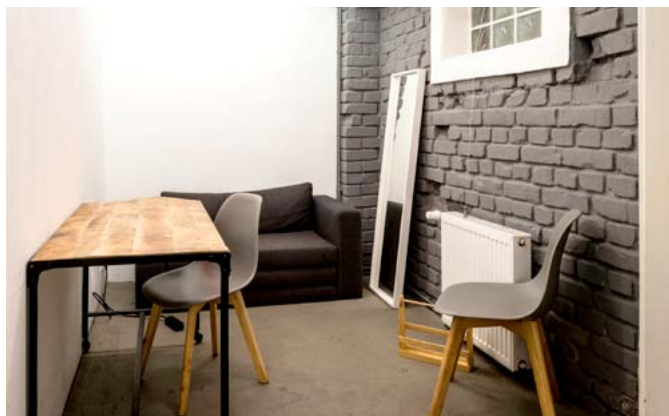
GALLERIES OPEN

- Floor space: 840 m² (parquet: 350 m²)
- Capacity: 800 seated

BACKSTAGE

FACILITIES

- 3 dressing rooms for artists (lockable) / including furniture and WiFi
- 2 production offices
- 2 showers
- 4 toilets
- Kitchen / including stove, fridge, kitchen sink, hot & cold water, 3 m work space, several plug-ins for power access
- Catering area / table, seats for roughly 30 pax



LOADING



LOADING AREA > BALLROOM SIDE DOORS

- Loading ramp and 2 stairways
- Door dimension: (W x H) 1.7 x 2.0 m (including door latches) / (W x H) 1.8 x 2.0 m (without door latches)
- Loading way 10.0 m to stage
- 8 stairs in total / dispersed in 2 stairways covering with additional ramps possible
- Loading ramp (4.0 x 1.1 m) available



LOADING AREA > BACKSTAGE

- Loading ramp (no stairs)
- Door dimension: (W x H) 0.9 x 2.0 m
- Door within rolling gate: (W x H) 2.20 x 2.85 m





PLAY A SHORT
PRESENTATION VIDEO



NAUMANN'S TANZLOKAL

The Naumanns Tanzlokal (Naumanns Dance Hall) is the little venue of the Felsenkeller front house, located on the first floor.

This smaller venue is available for multiple event purposes, multifunctional for all kind of shows and absolutely self-sufficient with no effect on all grand ballroom events. A combination with the grand ballroom concepts and other Felsenkeller rooms is nonetheless possible.

SUITABLE FOR

- Medium sized conferences and workshop formats
- Get together
- Speeches
- Hybrid events

ROOM INFO / FACILITIES

ROOM

- Dimensions: (W x D) 8.7 x 16.2 m
- Clear height: 3.2 m
- Capacity: 250 standing / 100 seated

STAGE

- Dimensions: (W x D x H) 5.0 x 4.0 x 0.4 m
- Clear height: 2.8 m from stage edge
- Stage extension upon request



SOUND

Further equipment available upon request!

FRONT PA / MONITORING

- 4x PL Sub – PA
- 4x PL monitor
- 2x E12 – PA

DESKS & STUFF

- 2x CAT 7 lines FOH to stage
- 1x Midas M32 live + stagebox 32/8

STANDS

- 10x Gravity stand – tall
- 8x Gravity stand – small

MICROPHONES

- 4x Shure SM58
- 4x Shure SM57
- 2x Audix D2
- 2x Audix condenser
- 2x Beyerdynamic condenser
- 1x Audix D4
- 1x Shure Beta 52A

DI

- 6x DI box

LIGHTS

Further equipment available upon request!

POWER SUPPLY

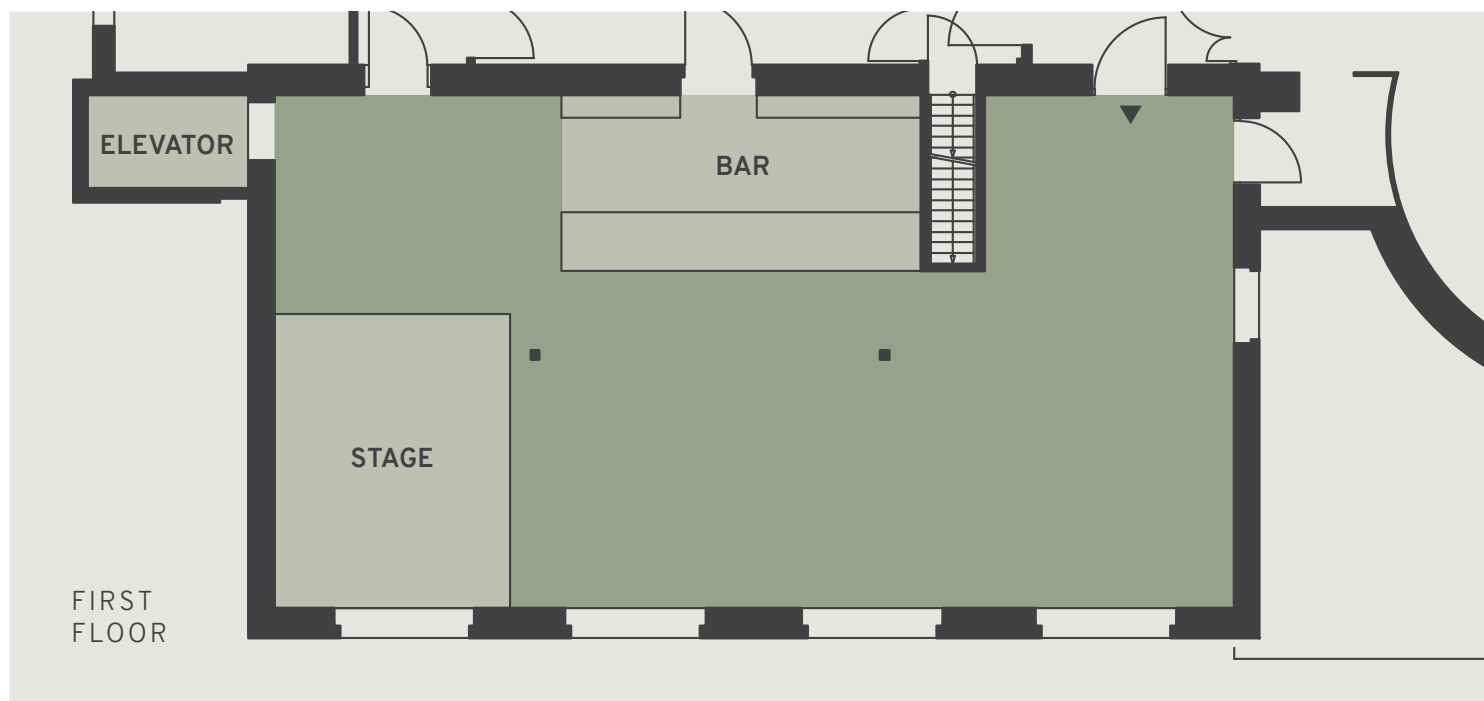
INSTALLED

- 6x Cameo CLPST 64 RGBA LED Par
- 4x Fresnel 650 Watt
- 1x fog machine American DJ VF 1600
- 1x mirror ball
- 1x MA Lighting GrandMa1 ultralight

ROOM / STAGE

- 4x 16A 1 PH
- 1x 32 ACEE

ROOM SETTING



BACKSTAGE

FACILITIES

- Dressing room for artists / combination look, including furniture and WiFi
- Shower
- Toilet
- Catering area / counter, table without seats, for roughly 15 pax

LOADING

FACILITIES

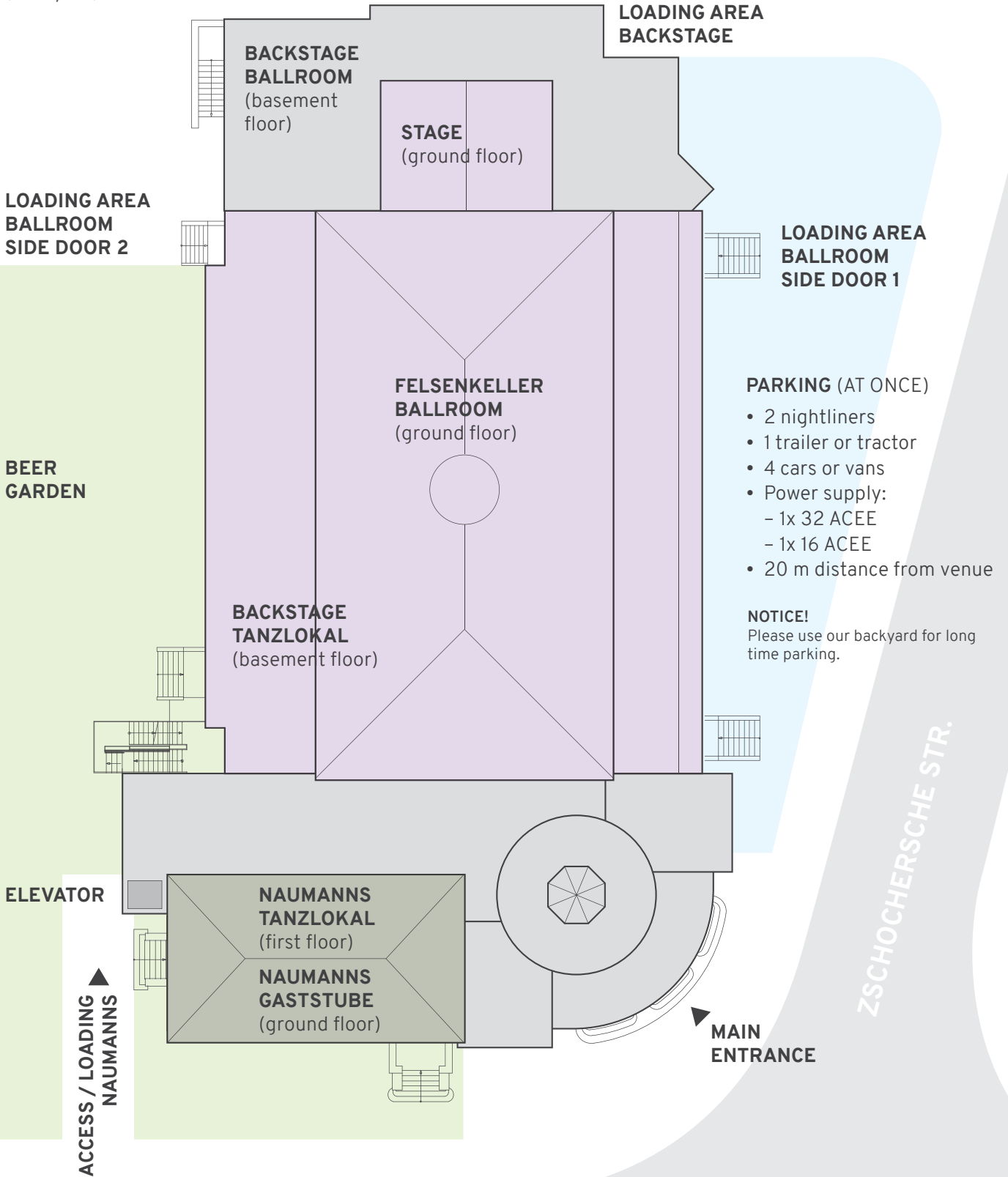
- Access via beer garden / Karl-Heine-Str.
- Elevator: (W x D x H) 2.1 x 1.2 x 2.1 m (doors: 0.9 m)
- Crew/Artists please use stairwell



OVERVIEW / PARKING / LOADING

**PARKING
ARTISTS / LONG TIME**
(backyard)

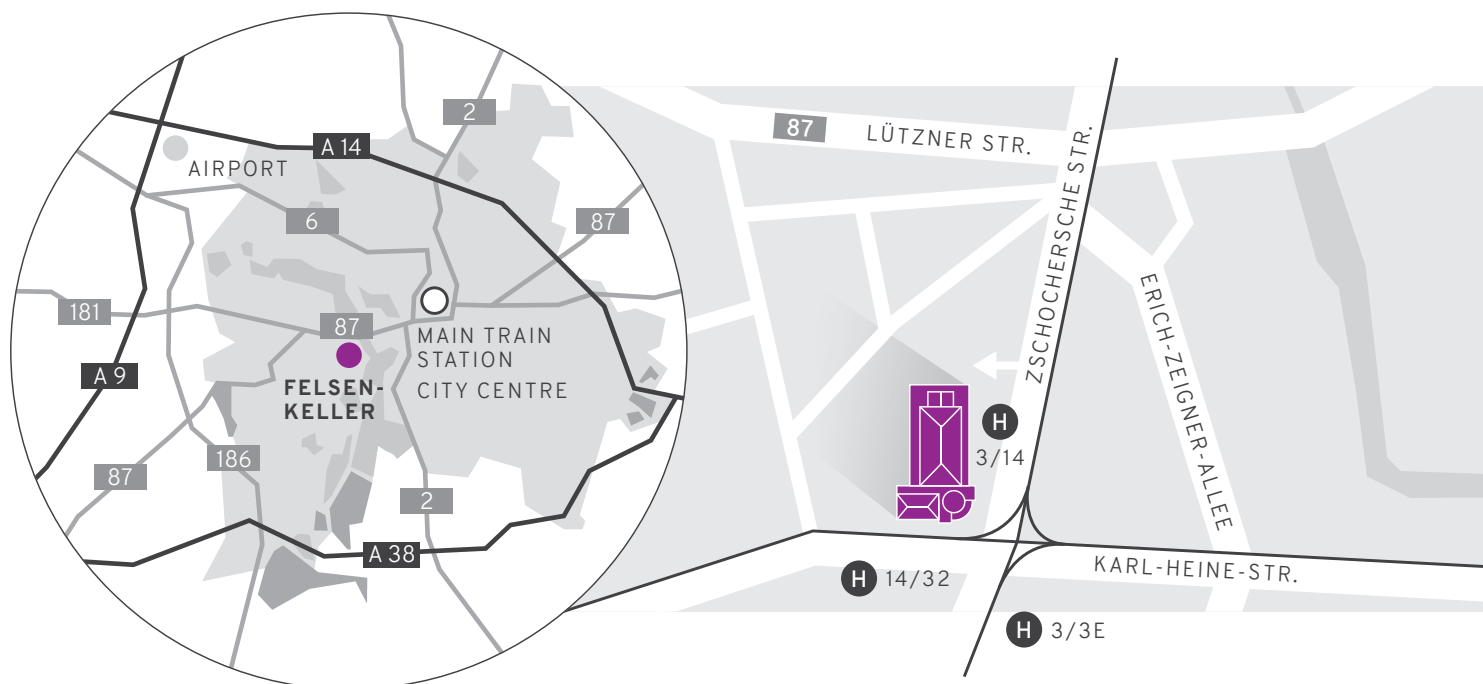
◀ **ACCESS / LOADING
BALLROOM**



TRAVEL INFO

APPROACH BY CAR

- Leave Autobahn 9 at exit 17 (Leipzig West)
- Follow Bundesstraße 181 (road signs to Leipzig Zentrum)
- Keep driving on Merseburger Str. / Bundesstraße 87 (becomes Lützner Str.)
- Turn right into Zschochersche Str.
- Use the driveway on the right Felsenkeller/REWE before main crossing Karl-Heine-Str.



POINTS OF INTEREST

NEARBY TO THE FELSENKELLER

- **Supermarket:** REWE supermarket on our backyard
- **Gastronomy:** Naumanns Gaststube (inhouse), several restaurants, cafés and bars right next to the Felsenkeller (2-5 min distance)
- **Gym:** Cross X Fit / Zschochersche Str. 79 c (1.1 km distance)
- **Mail station:** Deutsche Post (DHL) / REWE supermarket on our backyard
- **Laundry:** Textilpflege Bach / Zschochersche Str. 37 (250 m distance)
- **Hostel:** Spirit Lodge / Zschochersche Str. 23 (40 m distance)
- **Pharmacy:** Galenus Apotheke / Zschochersche Str. 16 (40 m distance)
- **Railroad main station Leipzig:** 4.4 km distance / tram lines 3 and 14 (15 min)
- **Music store:** Underground Music / Josephstr. 39 (350 m distance)
- **Record store:** Westfach / Karl-Heine-Str. 85 (500 m distance)



CONTACT

ADDRESS

Felsenkeller Leipzig
Karl-Heine-Str. 32
04229 Leipzig / Germany

+49 341 58 09 01 44
info@felsenkeller-leipzig.com
www.felsenkeller-leipzig.com

CONTRACTING

Felsenkeller Betriebs GmbH
CEOs: Jörg Folta / Marco Schulz

St-Nr: 232/108/09880
USt-IdNr: DE296512807
HR-Nummer: HRB 31636

BOOKING / DATES

booking@felsenkeller-leipzig.com

Jörg Folta
joerg.folta@felsenkeller-leipzig.com
Nils Sackewitz
nils.sackewitz@felsenkeller-leipzig.com

PRODUCTION / SOUND / LIGHTS

produktion@felsenkeller-leipzig.com

GASTRONOMY & CATERING

gastro@felsenkeller-leipzig.com

SOCIAL MEDIA & PRESS

presse@felsenkeller-leipzig.com

ACCOUNTING

buchhaltung@felsenkeller-leipzig.com

FACEBOOK

www.facebook.com/felsenkellerleipzig
www.facebook.com/naumannstanzlokal

INSTAGRAM

www.instagram.com/felsenkellerleipzig
www.instagram.com/naumannstanzlokal